



Electronic Dispensing Technique

The world is full of wonderful bars!

Bars are operated differently from country to country or from county to county. Hotel bars are not like nightclub bars and theme bars are not like neighbourhood bars. There are bars owned and run by individuals, and bars owned and managed by large pub-groups or nightclub chains.

The advantages of TAP Systems' products are universal and easily translate from one market to another.

- Presentation of the merchandise**
- Ease and smoothness of operations**
 - Cash flow & payment control**
- Electronic registration & administration**

Bars the world over are turning to Tap.



Clean, clear and controlled



Serve with speed, style and flair

10 shots every 30 seconds...



With a single touch, Tap pours a drink before you can count to 2!

All bartenders can pour simultaneously, with both hands.

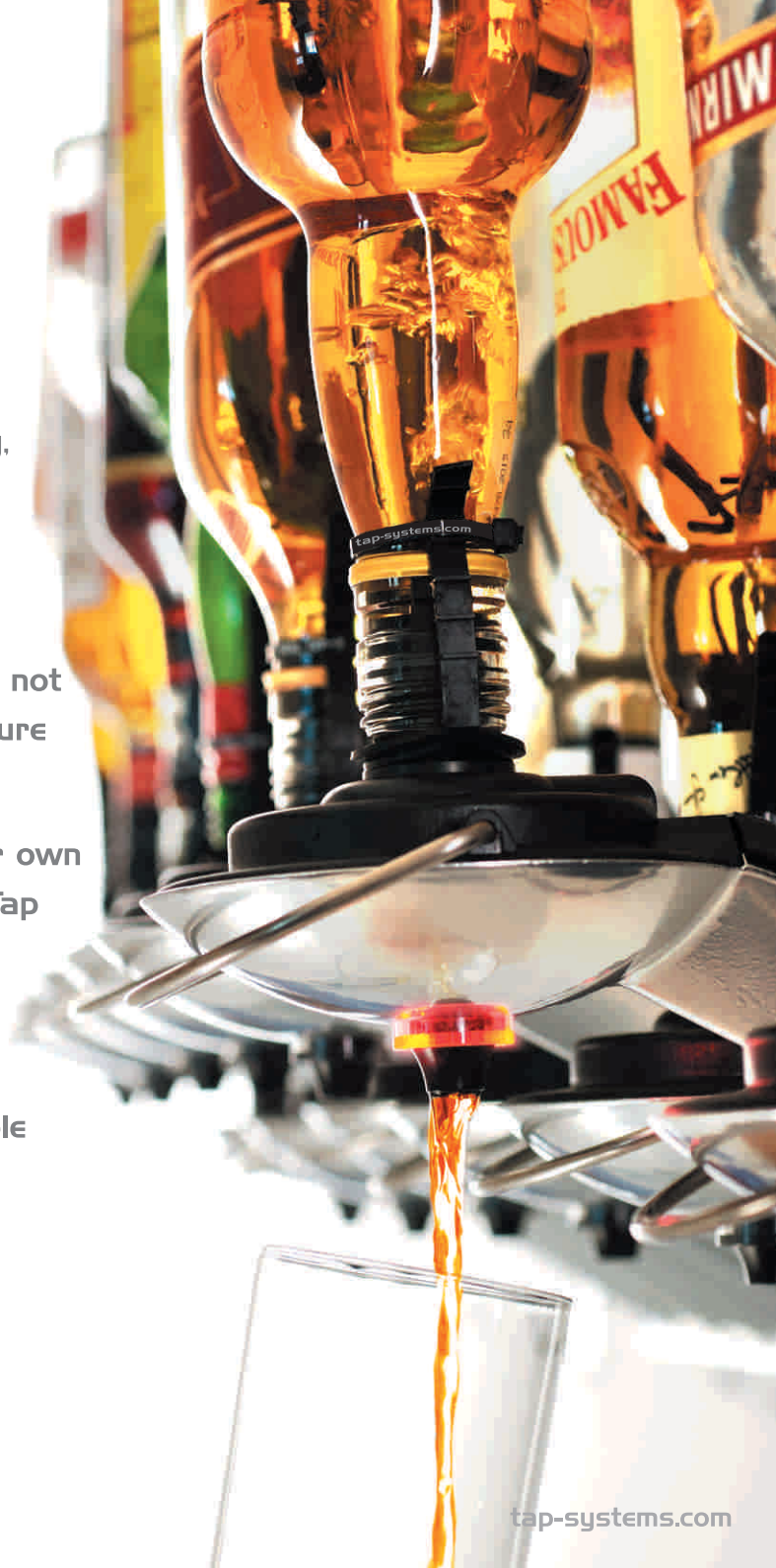
A light indicates when the pouring has finished and a new pour can begin.

A flashing light indicates when there is not enough in a bottle to serve a full measure and no dispensing can take place.

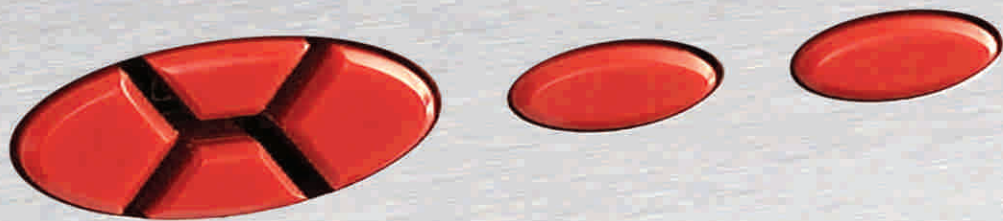
All bottles are clearly displayed in their own location. No more handling of bottles; Tap keeps the bar tidy. Empty bottles are easily and swiftly exchanged with pre-sealed bottles in inventory.

Functions like "Happy Hour" and multiple drinks sizes make this system unique.

-That's why it's the most efficient dispensing system in the world today!

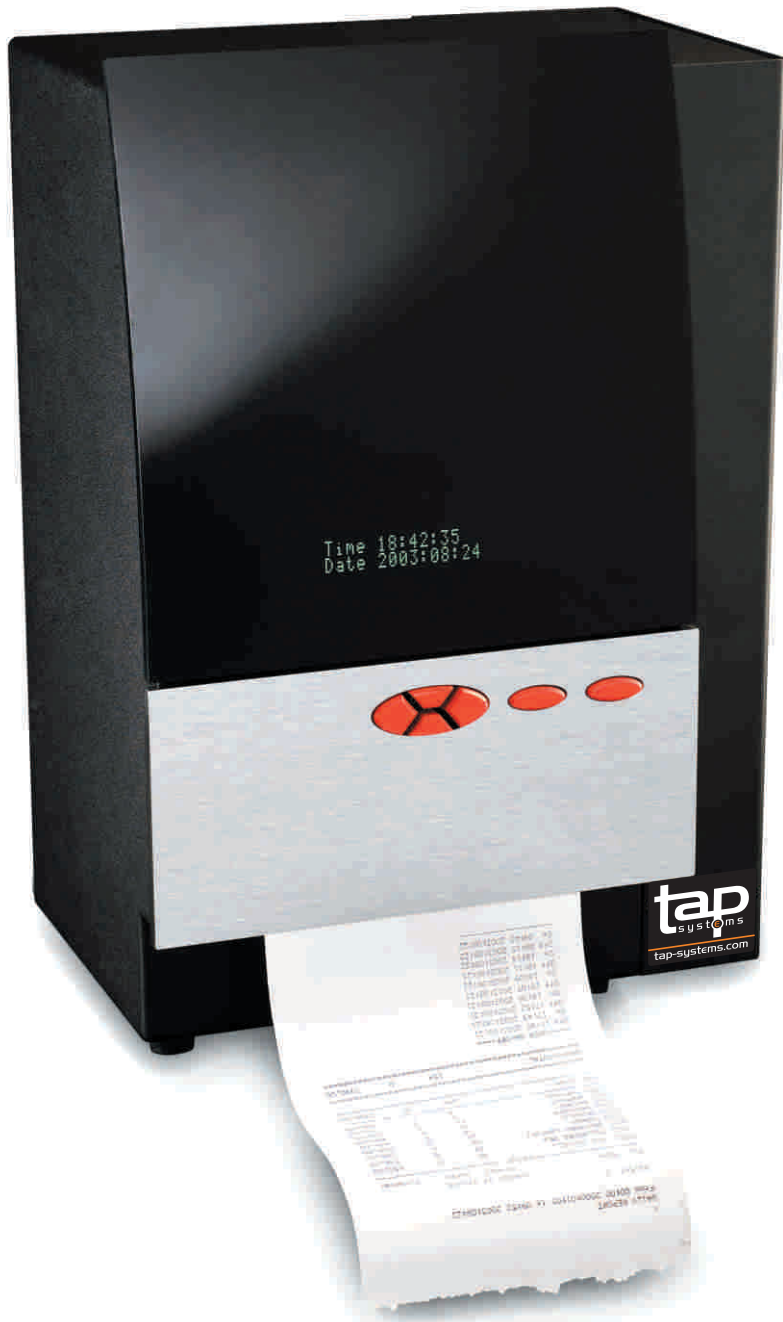


Time 18:06:06
Date 2005:12:24



Control

Control and administration in both bar and back office....



TAP Systems equipment controls the entire bar flow.

It is programmed to meet your specific wishes during installation.

At closing time, a total dispense report is printed, specifying all products: Spirits, draught beer, post mix, coffees, bottled articles, cigarettes, snacks, etc.

Connected to tills, data is provided to show and print differences between actual pours and "sales rung up".

PC connections allow you to process all dispense-information and export to Excel or other PC based programs.

Edil Products

		PLU DATA		NONDRIP		FLOW		COFFEE	
PLU	Product name	N. Price	N. Size	H Price	H Size	Group			
1	JACK DANIELS 2CL	2	150	3	2	150	0		
2	JACK DANIELS 4CL	2.1	300	3	4	300	0		
3	TULLAMORE 2CL	2.2	150	3	6	150	0		
4	TULLAMORE 4CL	2.5	300	3	7	300	0		
5	SOUTHERN COM 2CL	2	150	3	2	150	0		
6	SOUTHERN COM 4CL	3	300	4	2	300	0		
7	PERNOD 2CL	2.8	150	3	150	0			
8	PERNOD 4CL	2.6	300	3	8	300	0		
9	TEQUILA 2CL	2.2	150	3	4	150	0		
10	TEQUILA 4CL	2.3	300	3	5	300	0		
11	SMIRNOFF 2CL	2	150	3	2	150	0		
12	SMIRNOFF 4CL	2.1	300	3	4	300	0		
13	BACARDI 2CL	2	150	3	4	150	0		
14	BACARDI 4CL	3.4	300	3	5	300	0		
15	VODKA 2CL	2.1	150	3	2	150	0		
16	VODKA 4CL	2.3	300	3	4	300	0		
17	GORDONS 2CL	2.5	150	3	6	150	0		

Products, sizes and prices are entered into the PLU-list.

DAILY REPORT

From 00:26 2000-01:02 to 23:44 2000-01:16

Waiter: 0

PLU Name	GROUP	Number of drinks		Turnover	
		Normal	Happy		
0001 JACK DANIELS 2CL	0	38	0	196.00	
0002 JACK DANIELS 4CL	0	15	0	31.50	
0003 TULLAMORE 2CL	0	37	0	81.40	
0004 TULLAMORE 4CL	0	28	0	70.00	
0005 SOUTHERN COM 2CL	0	29	0	58.00	
0006 SOUTHERN COM 4CL	0	28	0	84.00	
0007 PERNOD 2CL	0	30	0	84.00	
0008 PERNOD 4CL	0	34	0	88.40	
0009 TEQUILA 2CL	0	23	0	59.40	
0010 TEQUILA 4CL	0	37	0	62.10	
0011 SMIRNOFF 2CL	0	35	0	70.50	
0012 SMIRNOFF 4CL	0	19	0	39.90	
0013 BACARDI 2CL	0	37	0	74.00	
0014 BACARDI 4CL	0	5	0	17.00	
0015 VODKA 2CL	0	8	0	12.60	
0016 VODKA 4CL	0	0	0	0.00	
0000 COFFEE	GROUP 1	4	0	8.80	
0081 CAPPUCCINO	1	1	0	3.00	
0082 CAFE BREW	1	1	0	2.00	
0083 CAFE AU LAIT	1	0	0	2.70	
0084 CHOCO MILK	1	0	0	5.20	
0085 MILK	2	0	0	4.00	
0086 ESPRESSO DOUBLE	1	0	0	2.10	
0087 CHOCOLATE	1	0	0	2.30	
0088 CAFE	4	0	0	13.20	
0089 ESPRESSO	1	0	0	2.40	
0090 ESPRESSO-DOC	1	0	0	3.00	
0091 HOT WATER	1	0	0	2.00	
0100 CARLSBERG SMALL	GROUP 2	21	0	17.60	
0101 CARLSBERG MEDIUM	0	55	0	115.50	
0102 CARLSBERG LARGE	0	69	0	200.10	
0030 GROLSCH	GROUP 3	23	0	321.10	
0031 GUINNESS	0	15	0	139.32	
0032 KELEKERRY	0	8	0	74.76	
0033 KELEKERRY	0	44	0	375.70	
0034 CAIS	0	14	0	106.50	
SUB-TOTAL		723	0	2420.58	
Manual count					
PLU Name	GROUP	Result	Start	End	Turnover
0040 CHIPS	14	20	6	30.80	
0041 PRIMS LGT	26	60	34	54.60	
0042 BAC BREKZER	93	100	7	241.80	
SUB-TOTAL		133		327.20	
GRAND-TOTAL		856	0	2747.78	

Daily report

Maximize your drinks presentation -



and sell more!

100% control and easy handling...



Spouts are easily mounted with a decompression tool. Sealing ties are fixed and new bottles are ready for inventory.

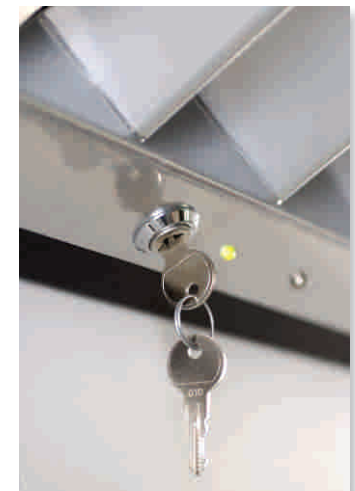
Tap Systems makes bartending easy.

Pre-sealed bottles are exchanged easily and swiftly.

The patented spouts are genuine non-drip and machinewashable.

Individual Dallas Keys can register each bartender's sales.

With the rack-lock, all bottles are secured and cannot be removed or misplaced. The manager has the key.



Bottles are placed into the rack and can be locked.



Tap 3000-9 Gold



Tap 3000-12 Brass



Tap 3000-9 Crom



Tap 3000-12 Alu

The TAP Systems™ product range and connection scheme

External

Pos
E-pos

PC
Tap software

Beer
Free flow or
fixed portions

Postmix
Free flow or
fixed portions

Wine
Free flow or
fixed portions

Coffee
maker

Tap controls and spirits dispensers

Tap 2000 S

Spirit control unit,
up to 8 wall racks.
Can be connected to a printer.



Tap 2400

Master Control,
built in printer,
up to 16 wall racks
or F/P's and up to
56 flow meters.
Can connect to Pos.



Tap 1000

With this box you can control
all your beverage from your
PC or Pos via Tap 3000 and
2000 F/P (up to 30 units).
Include Pc software.



Tap 2000 FP

F controls free flow:
Up to 12 lines. (beer, wine, soda)
P controls fixed portions:
Up to 8 valves with up to 4 sizes.
Connects to printer (stand alone)
or to TAP 1000/2400



Tap 3000-12
12 bottles wall rack



Tap 3000-9
9 bottles wall rack



Tap 3000-6
6 bottles wall rack

* These devices can be mounted horizontally or vertically. Displays can be tilted for easy reading.

Tap tops and accessories

Tap top
Continental
spout, patented



Tap top uk25
Uk spout, 25 ml.
patented



Tap top uk35
Uk spout, 35 ml.
patented

Tap ties
Certified sealing ties



Tap flow
Flow meter with
10 meter cable



Tap key
Waiter key function



From the traditional Pub in Dublin



The Dubliner



Copenhagen, Denmark



Herning, Denmark



Drachten, Netherlands



Holstebro, Denmark



Waxford, Ireland

- to the hottest lounge in New York!



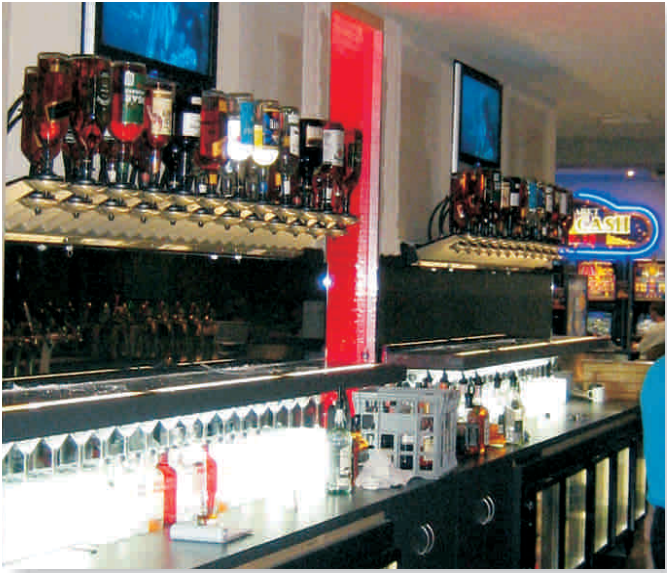
Tamworth, England



Gothenburg, Sweden



Copenhagen, Denmark



Mildura, Australia



Hilton Birmingham, England



Manhattan

- your success is our business - just ask our customers.



Copenhagen, Denmark



North Carolina, USA



Copenhagen, Denmark



South Carolina, USA



Germering, Germany



Westkapelle, Netherlands

**Tap Systems are patented and have been approved
by the British National Weights and Measures Laboratory.**

Professional Beverage Management

www.tap-systems.com

Phone USA +1 866 452 2137

Phone Ireland +353 51 85 5033

Phone UK +44 (0) 7792 087880

Tap Systems · Ledreborg allé 28 · 4000 Roskilde · Denmark
Phone +45 7020 1323 · Fax +45 4648 2460 · info@tap-systems.com